



ANNUAL REPORT

2024-25

CONTENTS

National Manager's Report	03
Leadership Changes	04
Our Team	05
Research Highlights	06
Research Activities	07
New Research Spotlight	08
Training Awards	09
Engine Room Activities	10
Our Activities	11
PC4 in a Snapshot	12
National Memberships	13
Member Breakdown	14
CAG and Community Activities	15
Opportunities for EMCRs in PC4	17
PC4 Socials	18
The PC4 Years	19

National Manager's Report

This year has been a time of great change for PC4, with our Director of 16 years Professor Jon Emery stepping down, as he moves to Singapore to establish a new cancer prevention program at Lee Kong Chian School of Medicine. Jon has been the driving force in primary care cancer research in Australia for so many years – not only leading ground-breaking research but also generously supporting emerging researchers and consumers, and effectively advocating for the pivotal role of primary care in cancer control. Jon's expertise will be greatly missed, and we wish him well in Singapore. To acknowledge Jon's time with PC4, we have put together a small tribute – please see page 4.

We have been incredibly fortunate to welcome A/Professor Carolyn Ee to the PC4 Director role, commencing July 2025. Carolyn brings strong clinical knowledge, combined with a survivorship research focus, particularly in populations with poorer outcomes. The PC4 team is looking forward to working closely with Carolyn and continuing to build and diversify PC4's activities under her leadership. I would also like to thank our senior PC4 members for supporting this transition and volunteering their time to ensure we continue to provide a high level of primary care expertise in various state and national cancer initiatives.

Even with these significant changes, PC4 has provided strong research and trial development support to our members throughout the year. As outlined on page 7, we have contributed to the development of 18 new studies, utilising a diverse range of support services to align with our members' needs. We have seen an exceptional pipeline of research

projects presented at our Engine Room meetings, with several of these further supported by Concept Development Workshops and specialist expertise in subject matter and trial development.

One of my personal highlights was hosting our very first joint early-to-mid career researchers and Community Advisory Group (EMCR-CAG) Day in May. This in-person event was a perfect opportunity to bring researchers and community members together to learn from each other and discuss emerging research ideas. In addition, there was dedicated time for learning in areas of identified need for both groups, as well as networking. The only downside was that there simply was not enough time – we will plan for extending the event next time!

This year has also seen PC4 continue to capitalise on one of its main strengths - enabling collaborative trial research through engaging more primary care researchers, building capacity and diversity within our Community Advisory Group, and furthering project development with other cancer trials groups. Through leveraging knowledge, expertise and experiences we continue to support an amazing portfolio of primary care research and we look forward to working closely with our members in the coming year.



Dr Janelle Jones
National Manager

Leadership changes



Professor Jon Emery
Founder of PC4

After 16 years at the helm of PC4, Professor Jon Emery has accepted a position at Lee Kong Chian School of Medicine in Singapore to establish a program in Cancer Prevention and Early Detection. We are immensely grateful for Jon's contribution to PC4 and the cancer research community more broadly. As a farewell, we shared a special video that reflects on his incredible journey and the evolution of PC4 under his guidance. You can [watch the video here](#). We wish Jon every success in this exciting new chapter and look forward to seeing the global impact of his work continue to grow.



A/Professor Carolyn Ee
PC4 Director

We were delighted to appoint Associate Professor Carolyn Ee in Prof Emery's place. Carolyn is an academic GP and Associate Professor (Cancer Survivorship and Primary Care) at the Caring Futures Institute, Flinders University. She is a nationally recognised emerging leader in chronic disease management in primary care. Her program of work focuses on co-creation and evaluation models of cancer survivorship care that aim to improve and optimise patient outcomes and prioritise patient wellbeing, particularly in the areas of health equity. Her expertise spans qualitative research, multi-centre clinical trials, evidence synthesis and clinical practice guideline development and translation.

Carolyn was a PC4 Training Award Winner in 2020 and has been heavily involved with PC4 for several years, as a member of the PC4 Scientific Committee and Co-Chair of our Living With and Beyond Cancer Engine Room since 2021.

"Primary care plays a vital role across the cancer care continuum. I am honoured to lead PC4 and collaborate closely with our members to enhance clinical trials in cancer and primary care that improve patient outcomes and wellbeing"

– A/Prof Carolyn Ee

Our Team



A/Prof Carolyn Ee
Director
(commenced July 2025)



Dr Janelle Jones
National Manager



Sarah Nagorcka
Communications Coordinator



Aradhana Chandra
Administration Officer



Eleanor Dickson
Research Support Officer

Research Highlights

18

new studies

11

funding applications submitted

\$4.5+
million

awarded to successful
funding applications

Research Activities



18

new studies supported



2

new studies open to recruitment



900+

participants recruited



64

recruitment sites



11

funding applications submitted for 10 projects



57

requests for support



2

training awards



6

CDW/PRW workshops

New Research Spotlight

ROSELLA

Implementation of risk-stratified population screening for Australia's most common cancers

Chief investigator: Sibel Saya

In 2022, there were 78,114 expected diagnoses of breast, bowel, prostate cancer and melanoma, making them the most common cancers in Australia. Diagnosing cancer at an early stage increases the chances of survival and reduces the many burdens of treatment on patients and their families. Cancer screening provides this opportunity for early diagnosis, as it can identify cancer before symptoms appear. Cancer screening is currently only available to Australians in certain age groups and only for some cancers. If we were to employ a better risk-based approach to providing cancer screening, it would create a significant opportunity to find cancer earlier in more people, improving health outcomes for Australians. In addition to VCA funding last year, Dr Sibel Saya was awarded \$984,248 through the MRFF Genomics Health Futures Grant to pursue this research.

EMPOWER-SMS GP

Supporting women's health outcomes after breast cancer treatment comparing a text message intervention to usual care

Chief investigator: Anna Singleton

This trial is testing if sending a text message-based wellness program to patients between GP appointments can:

- 1) improve people's health, especially physical activity and healthy eating and,
- 2) be helpful for GPs (e.g. reducing burden, improve patient satisfaction)

The trial was designed in partnership with patient advocates, GPs, health professionals, researchers, and members of the Primary Care Collaborative Cancer Clinical Trials Group.

EMPOWER-SMS has been tested by over 1000 breast cancer survivors across Australia and was found to be effective for improving endocrine therapy medication adherence and well-liked by participants; most '(strongly) agreed' EMPOWER-SMS GP was easy-to-understand (99%), useful (85%), helped them feel supported between appointments (87%) and motivated them to increase physical activity (70%) and healthy eating (69%).

Training Awards

Through our annual Training Award, we encourage greater understanding of the primary care needs of cancer patients and survivors. We support clinicians, early and mid-career researchers to undertake research and skills development in cancer in primary care. This year, we encouraged projects with a focus on Priority Populations as outlined in the Australian Cancer Plan.

We would like to extend our congratulations to the two recipients of our 2025 PC4 Training Awards:



Farwa Rizvi

St Vincent's Hospital, Deakin University

Farwa will use the PC4 Training Award to investigate general practitioners' experiences supporting culturally diverse populations in cancer screening.



Darren Haywood

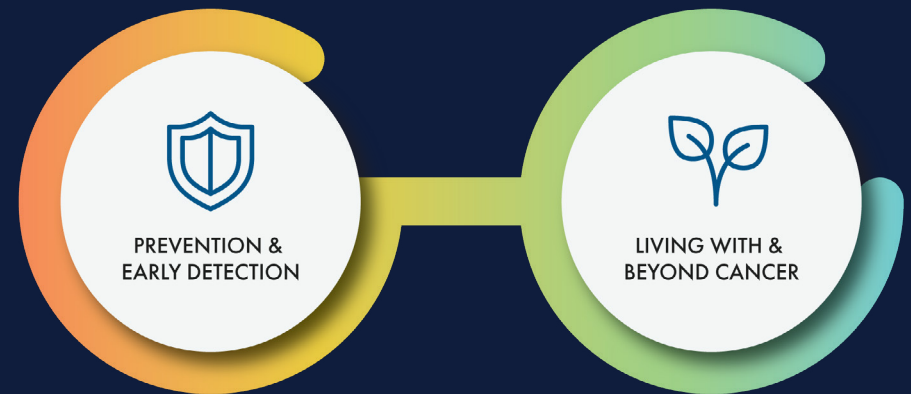
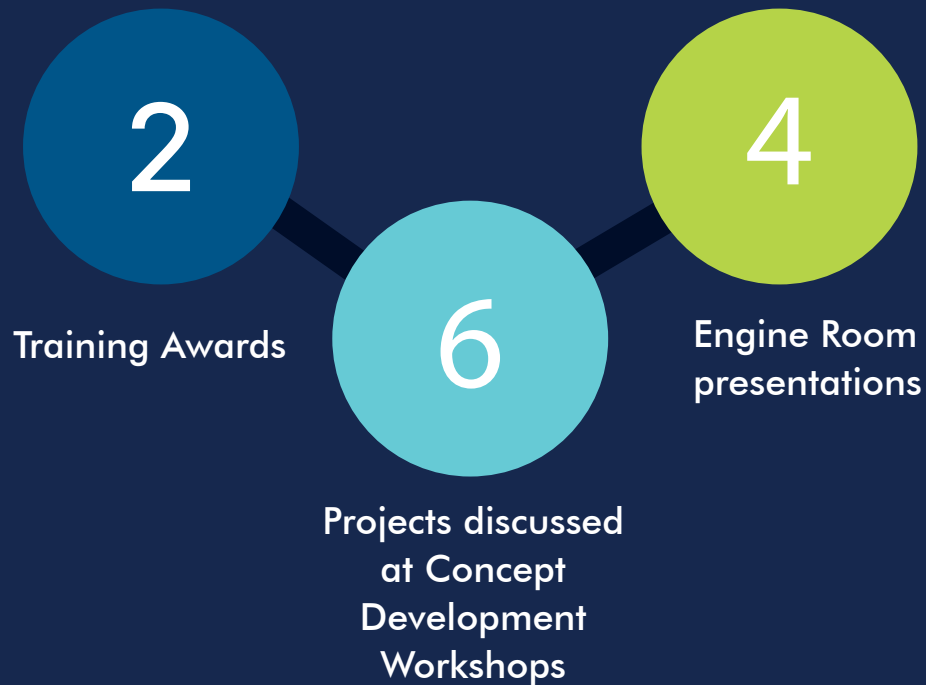
University of Technology Sydney

Darren will use the PC4 Training Award to conduct research into understanding general practitioners' barriers and facilitators to implementing effective behaviour change strategies for CALD cancer survivors.



Engine Room Activities

We held several virtual and in-person workshops to support our members with both concept development and finessing grant applications in 2024/25.



We're passionate about building capacity in primary care research. Following these workshops, it was fantastic to see 11 funding applications submitted for 10 projects.

Our Activities



The role of the GP in improving cancer outcomes and achieving equity in cancer care

September 2024

Hosted by the Caring Futures Institute, Flinders University in partnership with Cancer Australia and The Primary Care Collaborative Cancer Clinical Trials Group.

This general practice focused webinar attracted over 135 attendees, with the majority being GPs. The feedback was very positive with attendees liking and wanting more information around screening.



EMCR CAG Training Day

May 2025

PC4 hosted its first joint workshop in Melbourne, bringing together our Community Advisory Group and early- to mid-career researchers. The event provided a valuable opportunity for shared learning and open discussion. Researchers learnt from Prof Jon Emery and Prof Nicole Rankin about complex trials, implementation science and trial budget development.

In the joint session, researchers were able to ask consumer representatives important questions, such as how to find suitable community members to collaborate with, what constitutes a reasonable workload, and how to effectively communicate cancer research to lay audiences.



Community Outreach Event

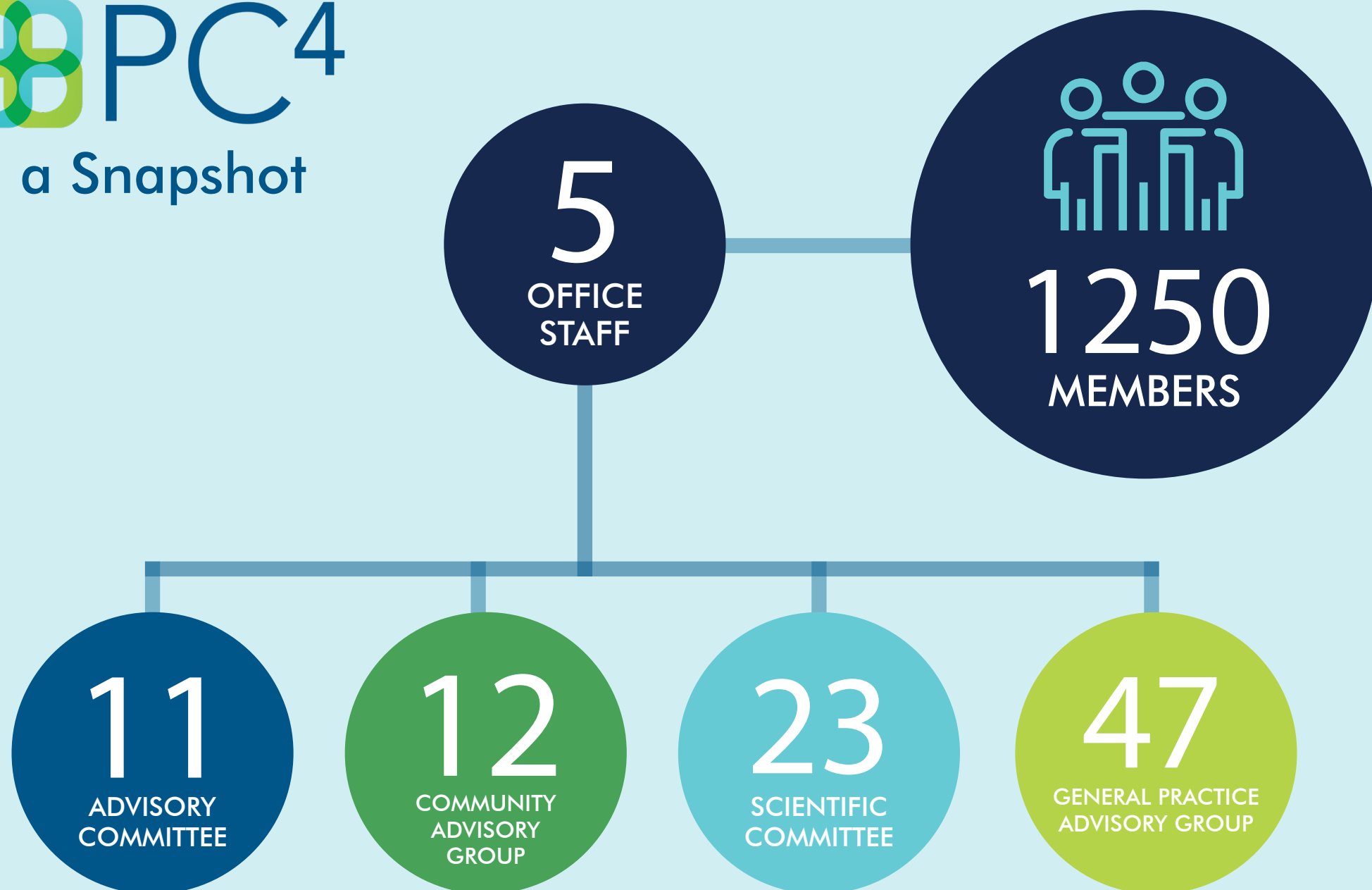
June 2025

Along with members of the Cancer in Primary Care team, PC4 was thrilled to co-host a Clinical Trial Information Session with the Chinese Cancer and Chronic Illness Society of Victoria (CCCIS) at Hawthorn Library. This event was also proudly supported by the VCCC Alliance.

The event featured both Mandarin and Cantonese sessions with around 40 participants in each group. The session focused on the PC4-supported CASSOWARY trial. This trial is exploring whether a new DNA test collected via a saliva swab at a GP clinic could be a cost-effective and efficient way to identify a person's cancer risk. This study allowed a broader discussion of the nature of cancer clinical trials and how they encompass much more than medications and cancer treatment, but also projects that improve cancer prevention, early detection and survivorship.

PC4

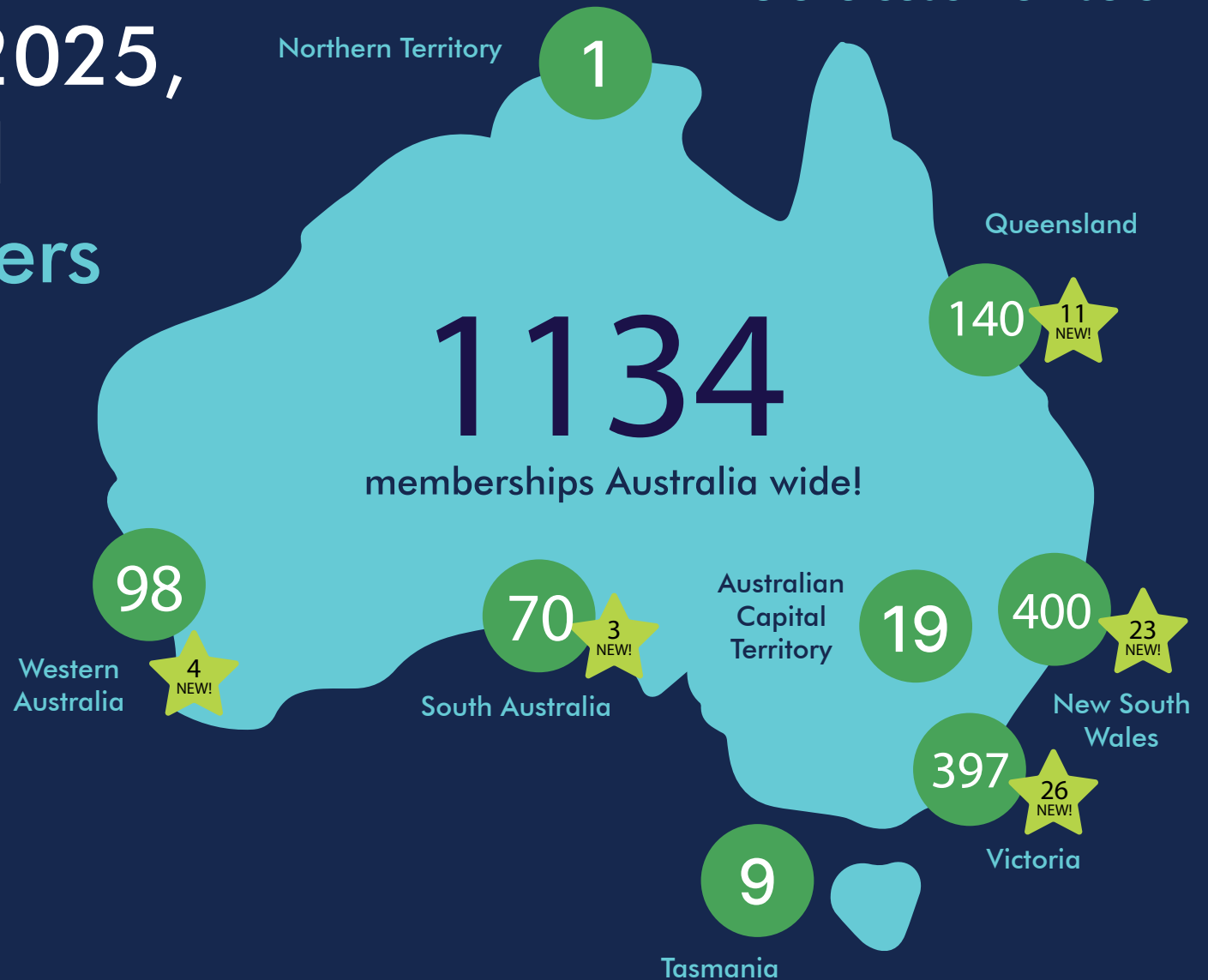
In a Snapshot



National Memberships

During 2024/2025,
PC4 welcomed
67 new members
nationwide!

**PC4 currently has
116 overseas members**



 TOTAL MEMBERSHIPS
 NEW MEMBERSHIPS

Member Breakdown

Top 5 Disciplines



Nursing

16%



Researchers

15%



Public Health

12%



GPs

11%



Consumers

8%

CAG & Community Activities

The PC4 Community Advisory Group (CAG) consists of 12 members, who brings across various expertise and lived experience into all aspects of PC4's work. We are pleased to have welcomed two new members into the CAG: **Saba Nabi** and **Victoria Turner**.



Victoria Turner

Victoria is a registered nurse, and has a background as a midwife and university lecturer. She is currently a casual TAFE teacher of Nursing and Aged Care and a National Assessor for the Australian Nursing and Midwifery Accreditation Council (ANMAC). She has held many voluntary, community engagement, and advisory positions within her local health district and other non-government organisations. Having the lived experience of late-stage ovarian cancer, she has a particular interest in addressing the disadvantage faced by regional and remote patients in accessing clinical trials and treatment options.

Saba Nabi

Saba is also regionally based and is heavily involved in advocating for her community. A registered pharmacist with an MBA in Health and a Ph.D. in Biomedical Sciences, she has led major health initiatives across regional NSW, including organ donation, refugee health, and neonatal care planning. In 2023, she was awarded an OAM for her service to community health, education, and multicultural affairs. She currently serves as Deputy Co-Chair of the NSW Health Consumer, Carer and Community Council, advocating for regional and diverse community voices in healthcare.



CAG & Community Activities

Over the course of the year, we had a healthy number of new studies, with our CAG providing feedback on seventy-five percent of them, as well as several joining the research team as Investigators. This is a celebration of the hard work our CAG has put in over this past financial year. This assistance has helped develop new cancer research with a focus on primary care and how primary care can improve patient outcomes.

Research & Grants

We are thrilled to share that PC4-supported projects received over \$4.5 million in funding over the past year.

Successfully funded projects include:

- **ROSELLA:** Implementation models for risk-stratified population cancer screening
Chief Investigator: Sibel Saya
Community Advisory Group input: George Fishman (CI); Nikki Davis (CI)
Louise Bailey (AI)
- **APAP-YCS:** a Co-designed adaptation of the Adapted Physical Activity Program to promote lifestyle physical activity among young cancer survivors
Chief Investigator: Natalie Bradford
Community Advisory Group input: Makala Castelli, Nikki Davis
- **CASSOWARY-CALD:** Identifying adaptations required to facilitate patients from CALD communities to participate in primary care-based cancer clinical trials
Chief Investigator: Sibel Saya
Community Input: Dorothy Yiu and the Chinese Cancer & Chronic Illness Society of Victoria

\$4.5+
million in funding

Workshops

Each year we run a number of Peer Review and Concept Development Workshops to assist our researchers to develop robust funding applications. Our consumer members provide guidance on the patient and community aspects of these concepts. This year, in response to feedback, we held separate meetings for consumers ahead of some of the formal workshops in order for researchers to explain the concepts in a less technical environment and respond to any questions.

Training

In June this year, PC4 supported Monique Bareham and Saba Nabi to attend **A consumer's guide to health economics in cancer research workshop** run by CREST at the University of Technology Sydney (UTS).

This was a valuable opportunity to gain insight into the role of health economics in cancer clinical trials, with the CREST team presenting on how clinical trials gather health economics information to help government to decide if medicines and programs are supported through the PBS/MBS systems.



Building Capacity: Opportunities for Early-to-Mid Career Researchers (EMCRs) in PC4

Research/Trial Development

Training Awards
Concept Development Workshops
Systematic reviews
Engine Rooms

Governance & Oversight

Scientific Committee
Advisory Committee
Local Organising Committee

EMCRs

Grant Writing

Streamlined Peer Review Workshops
Investigator Grant Review

Education/Learning

Practical Resources: A Budgeting and Best Practice Guide
EMCR-CAG Day

PC4 Socials



576
FOLLOWERS

LINKEDIN



1283
FOLLOWERS

X / TWITTER



43.7%

MEMBER UPDATE
OPEN RATE

The PC4 Years!

2009

PC4 Founded

Founding Members: George Fishman (CAG), Julie Marker (CAG), Geoff Mitchell, Leanne Monterosso, Max Shub (CAG), Lyndal Trevena & Jon Emery



PROCare Trial

NHMRC Funded Phase II randomised controlled trial of follow-up of men with prostate cancer in primary care.



Inaugural National Manager

Julia Fallon-Ferguson

2010–2013

Sax Institute rapid review

Highlighted the evidence around the role of primary care in the follow up and care of cancer patients.

Inaugural Training Award Winner

Kylie Vuong



2017

Kristi Milley joins PC4 as National Manager

Shared Care Principles Statement Published

PC4 a finalist in Australian Podcast Awards

New PC4 Logo launched



2018

Cheers with Peers & Research Round-up launched



PC4 moves from Perth to Melbourne

2014–2016

First PC4 Scientific Symposium

2019 – a decade of PC4!

GP Circle Established



2021

Scientific Working Groups
become Engine Rooms

Early Career Research
Network Established



2020 – the COVID years

Global lockdowns in place/
Working from home
implemented



2022

The PARTNER Network is
founded with help from
PC4

Consumer
podcast
launched

Janelle Jones
joins PC4 as National Manager

\$50M+ in funding
granted over the years

2025 and beyond...

Jon Emery moves to Singapore/
Carolyn Ee becomes new PC4 Director

2024 – 15 years of PC4

PC4 hosts Ca-PRI
(Ca-PRI's 15th anniversary)

Looking ahead...

2026 Scientific Symposium





CONNECT WITH US

info@pc4tg.com.au
pc4tg.com.au



@PC4TG

PC⁴